



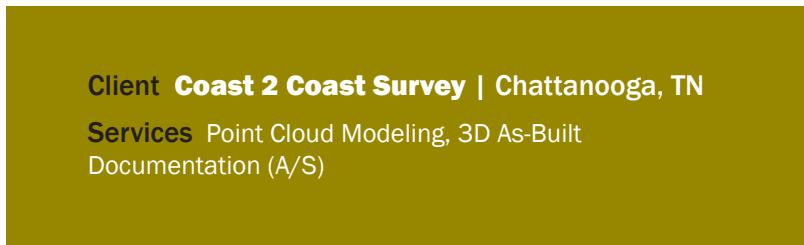
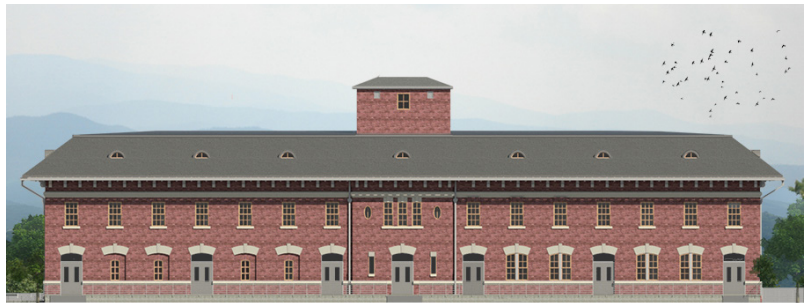
INTEGRATION

# ETSU Inter-Professional Education & Research Center

East Tennessee State University,  
Elizabethton, TN

RedChair Architects provided architectural services for a \$13M renovation of an existing National Historic Landmark building on the four-story Veterans Affairs Medical Campus in Johnson City, TN. The renovated structure includes a 38,000 SF inter-professional education and research space and incorporates educational space, simulation labs, common areas, and administrative suites. The original structure was constructed in 1902 and consists of heavy timber frame and decking with load bearing brick exterior walls.

Users of the renovated structure include the College of Medicine, Pharmacy, Nursing, Clinical & Rehabilitative Health Sciences, and Public health. This facility provides a center where students, faculty, and staff from the five health sciences programs can work and learn in a collaborative team-based environment. The building retains the historical character of the building with its facade being restored to its original appearance while the interior has been upgraded with the latest technology for its new use as a high tech space. Brick windows have been reopened and original interior columns that stood strong are incorporated into the new design.



Client **Coast 2 Coast Survey** | Chattanooga, TN

Services Point Cloud Modeling, 3D As-Built Documentation (A/S)