



INTEGRATION

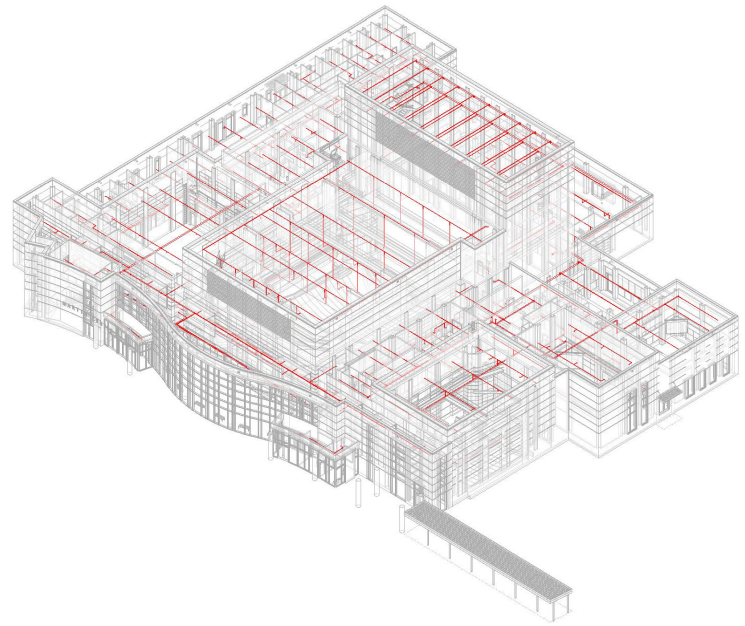
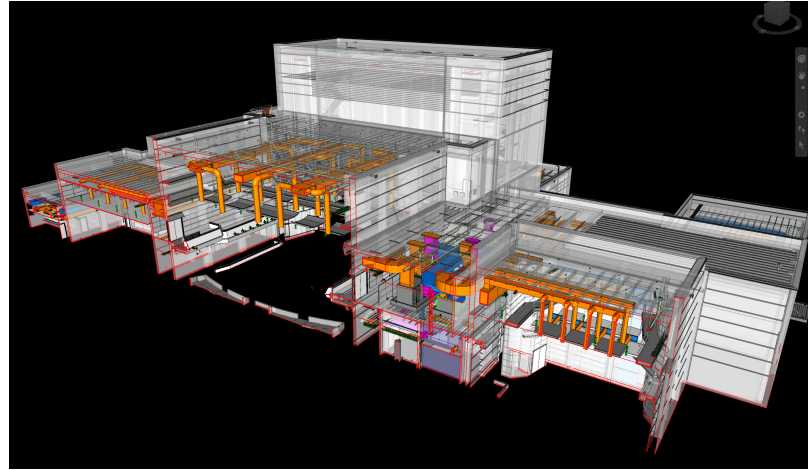


## ETSU Fine Arts Classroom Building

East Tennessee State University,  
Elizabethton, TN

The new \$53M performing arts facility features three performance halls which include a large auditorium, a studio theatre and a recital hall with a total seating capacity of approximately 1,600. McCarty Holsaple McCarty provided architectural services for the 93,194 SF performing arts center on the Johnson City campus.

S2A was contracted to support Denark Construction in the coordination of the building during the end of the design phase. S2A provided Fire Protection Modeling, Constructability Review, and Clash Reporting. After completing these services, S2A joined Denark to meet with the design team to review and find solutions for issues. This ultimately allowed the design team to resolve specific issues with the contractor alleviating unnecessary RFIs and change orders.



Client **Denark Construction** | Knoxville, TN

Services Fire Protection Modeling, Constructability Review, Clash Reporting