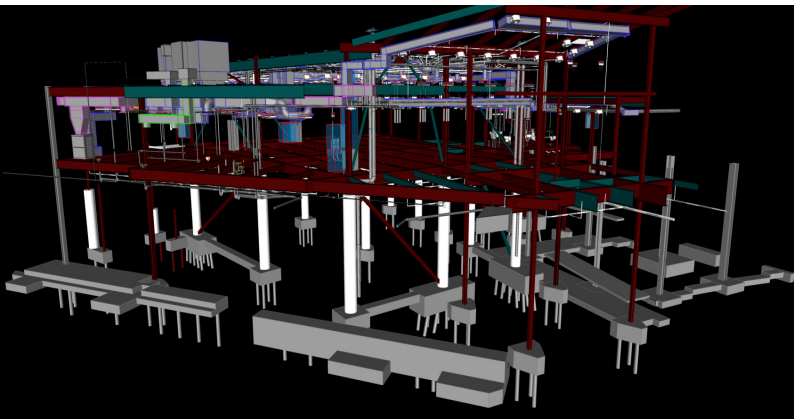
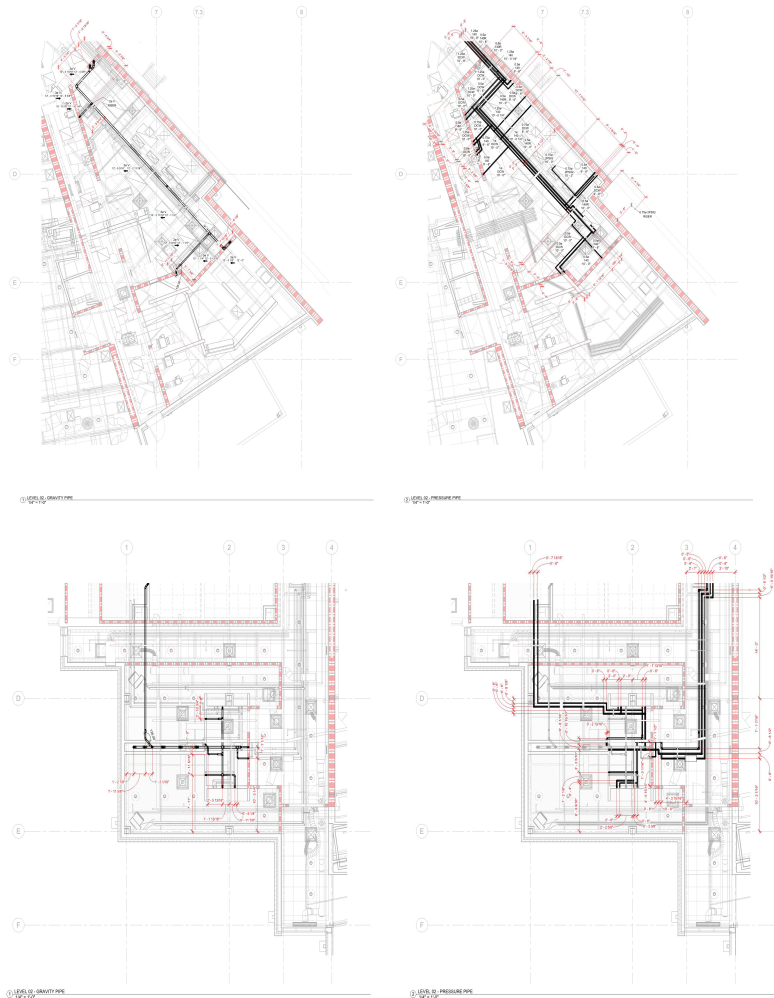


UNC Asheville Highsmith Student Union

Asheville, NC

To continue improving the students' experience on campus, UNCA created an addition to combine two existing buildings of their Student Union center. By combining the two buildings and adding additional space, the university is adding more features such as a student art gallery, lounge, and providing a spot for catering events and other community meetings. The \$12.4M renovation will serve the students, faculty, and community by combining an existing kitchen from the adjacent building to the new space to also serve as a cafeteria and catering location. The addition will continue the existing architecture to seamlessly integrate itself to the campus' overall design.



Client Emory Electric | Asheville, NC

Services Electrical Modeling, Electrical Coordination and Fabrication Modeling and Installation Drawings

Client MB Haynes Corp | Asheville, NC

Services Plumbing Modeling, Plumbing Coordination and Fabrication Modeling and Installation Drawings