

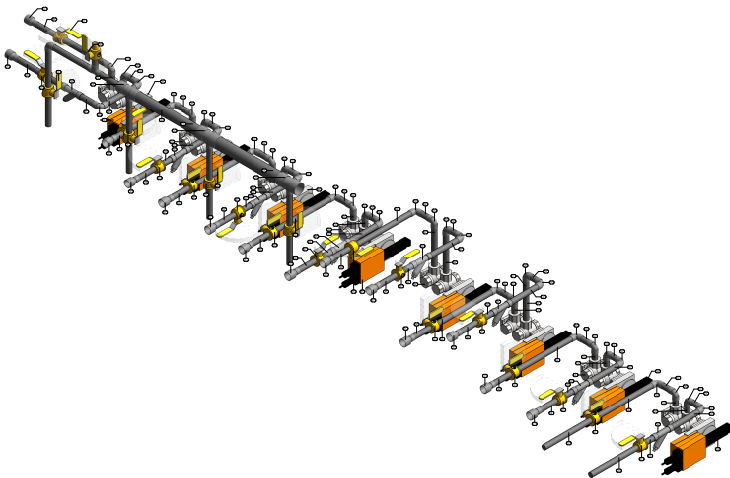
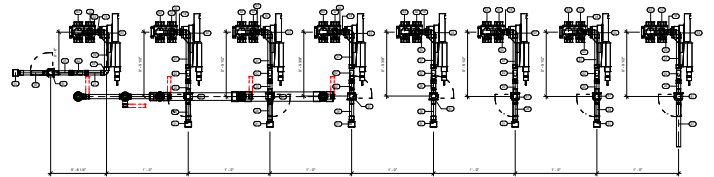
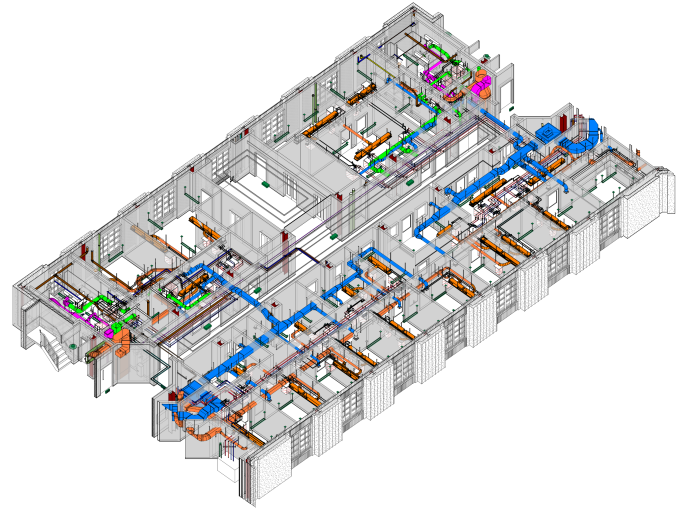


# John Sevier State Office Building Renovation

Nashville, TN

As part of the National and State Historical Registers, Nashville's John Sevier is a historical building being renovated to modernize the architectural exterior and interior. While focused on protecting the historic value of the building, the renovations will be centered on upgrading the windows and roof system on the exterior, while the interior will receive new floor plan layouts for offices, new plumbing fixtures, electrical power, communication upgrades, and an updated HVAC system. These upgrades and renovations, projected at \$27M, will be focused on sustaining the structure while maintaining its historic facades.

S2A was tasked with providing point cloud scanning of the existing exterior and interior building, modeling and coordinating the mechanical and plumbing trades, issuing coordination drawings and fabrication drawings, and clash reporting. S2A worked on-site with the architects, engineers, general contractor, and all trade contractors to find solutions to many unforeseen conditions.



6 WAY VALVE - PIPE BILL OF MATERIAL CHWS					
SYSTEM	MARK	QTY	SIZE	LENGTH	MANUFACTURER
CHWS	13	1	1/2"	7'-8.346"	CU Solder-Nibco (CU Solder-Nibco x CS BSW (threaded))
CHWS	14	1	1/2"	7'-1.132"	CU Solder-Nibco (CU Solder-Nibco x CS BSW (threaded))
CHWS	15	1	1/2"	7'-1.346"	CU Solder-Nibco (CU Solder-Nibco x CS BSW (threaded))
CHWS	16	1	1/2"	7'-1.346"	CU Solder-Nibco (CU Solder-Nibco x CS BSW (threaded))
CHWS	17	1	1/2"	7'-1.346"	CU Solder-Nibco (CU Solder-Nibco x CS BSW (threaded))
CHWS	18	1	1/2"	7'-1.346"	CU Solder-Nibco (CU Solder-Nibco x CS BSW (threaded))
CHWS	19	1	1/2"	7'-1.346"	CU Solder-Nibco (CU Solder-Nibco x CS BSW (threaded))
CHWS	20	1	1/2"	7'-1.346"	CU Solder-Nibco (CU Solder-Nibco x CS BSW (threaded))
CHWS	21	1	1/2"	7'-1.346"	CU Solder-Nibco (CU Solder-Nibco x CS BSW (threaded))
CHWS	22	1	1/2"	7'-1.346"	CU Solder-Nibco (CU Solder-Nibco x CS BSW (threaded))
CHWS	23	1	1/2"	7'-1.346"	CU Solder-Nibco (CU Solder-Nibco x CS BSW (threaded))
CHWS	24	1	1/2"	7'-1.346"	CU Solder-Nibco (CU Solder-Nibco x CS BSW (threaded))
CHWS	25	1	1/2"	7'-1.346"	CU Solder-Nibco (CU Solder-Nibco x CS BSW (threaded))
CHWS	26	1	1/2"	7'-1.346"	CU Solder-Nibco (CU Solder-Nibco x CS BSW (threaded))
CHWS	27	1	1/2"	7'-1.346"	CU Solder-Nibco (CU Solder-Nibco x CS BSW (threaded))
CHWS	28	1	1/2"	7'-1.346"	CU Solder-Nibco (CU Solder-Nibco x CS BSW (threaded))
CHWS	29	1	1/2"	7'-1.346"	CU Solder-Nibco (CU Solder-Nibco x CS BSW (threaded))
CHWS	30	1	1/2"	7'-1.346"	CU Solder-Nibco (CU Solder-Nibco x CS BSW (threaded))
CHWS	31	1	1/2"	7'-1.346"	CU Solder-Nibco (CU Solder-Nibco x CS BSW (threaded))
CHWS	32	1	1/2"	7'-1.346"	CU Solder-Nibco (CU Solder-Nibco x CS BSW (threaded))
CHWS	33	1	1/2"	7'-1.346"	CU Solder-Nibco (CU Solder-Nibco x CS BSW (threaded))
CHWS	34	1	1/2"	7'-1.346"	CU Solder-Nibco (CU Solder-Nibco x CS BSW (threaded))
CHWS	35	1	1/2"	7'-1.346"	CU Solder-Nibco (CU Solder-Nibco x CS BSW (threaded))
CHWS	36	1	1/2"	7'-1.346"	CU Solder-Nibco (CU Solder-Nibco x CS BSW (threaded))
CHWS	37	1	1/2"	7'-1.346"	CU Solder-Nibco (CU Solder-Nibco x CS BSW (threaded))
CHWS	38	1	1/2"	7'-1.346"	CU Solder-Nibco (CU Solder-Nibco x CS BSW (threaded))
CHWS	39	1	1/2"	7'-1.346"	CU Solder-Nibco (CU Solder-Nibco x CS BSW (threaded))
CHWS	40	1	1/2"	7'-1.346"	CU Solder-Nibco (CU Solder-Nibco x CS BSW (threaded))
CHWS	41	1	1/2"	7'-1.346"	CU Solder-Nibco (CU Solder-Nibco x CS BSW (threaded))
CHWS	42	1	1/2"	7'-1.346"	CU Solder-Nibco (CU Solder-Nibco x CS BSW (threaded))
CHWS	43	1	1/2"	7'-1.346"	CU Solder-Nibco (CU Solder-Nibco x CS BSW (threaded))
CHWS	44	1	1/2"	7'-1.346"	CU Solder-Nibco (CU Solder-Nibco x CS BSW (threaded))
CHWS	45	1	1/2"	7'-1.346"	CU Solder-Nibco (CU Solder-Nibco x CS BSW (threaded))
CHWS	46	1	1/2"	7'-1.346"	CU Solder-Nibco (CU Solder-Nibco x CS BSW (threaded))
CHWS	47	1	1/2"	7'-1.346"	CU Solder-Nibco (CU Solder-Nibco x CS BSW (threaded))
CHWS	48	1	1/2"	7'-1.346"	CU Solder-Nibco (CU Solder-Nibco x CS BSW (threaded))
CHWS	49	1	1/2"	7'-1.346"	CU Solder-Nibco (CU Solder-Nibco x CS BSW (threaded))
CHWS	50	1	1/2"	7'-1.346"	CU Solder-Nibco (CU Solder-Nibco x CS BSW (threaded))
CHWS	51	1	1/2"	7'-1.346"	CU Solder-Nibco (CU Solder-Nibco x CS BSW (threaded))
CHWS	52	1	1/2"	7'-1.346"	CU Solder-Nibco (CU Solder-Nibco x CS BSW (threaded))
CHWS	53	1	1/2"	7'-1.346"	CU Solder-Nibco (CU Solder-Nibco x CS BSW (threaded))
CHWS	54	1	1/2"	7'-1.346"	CU Solder-Nibco (CU Solder-Nibco x CS BSW (threaded))
CHWS	55	1	1/2"	7'-1.346"	CU Solder-Nibco (CU Solder-Nibco x CS BSW (threaded))
CHWS	56	1	1/2"	7'-1.346"	CU Solder-Nibco (CU Solder-Nibco x CS BSW (threaded))
CHWS	57	1	1/2"	7'-1.346"	CU Solder-Nibco (CU Solder-Nibco x CS BSW (threaded))
CHWS	58	1	1/2"	7'-1.346"	CU Solder-Nibco (CU Solder-Nibco x CS BSW (threaded))
CHWS	59	1	1/2"	7'-1.346"	CU Solder-Nibco (CU Solder-Nibco x CS BSW (threaded))
CHWS	60	1	1/2"	7'-1.346"	CU Solder-Nibco (CU Solder-Nibco x CS BSW (threaded))
CHWS	61	1	1/2"	7'-1.346"	CU Solder-Nibco (CU Solder-Nibco x CS BSW (threaded))
CHWS	62	1	1/2"	7'-1.346"	CU Solder-Nibco (CU Solder-Nibco x CS BSW (threaded))
CHWS	63	1	1/2"	7'-1.346"	CU Solder-Nibco (CU Solder-Nibco x CS BSW (threaded))
CHWS	64	1	1/2"	7'-1.346"	CU Solder-Nibco (CU Solder-Nibco x CS BSW (threaded))
CHWS	65	1	1/2"	7'-1.346"	CU Solder-Nibco (CU Solder-Nibco x CS BSW (threaded))
CHWS	66	1	1/2"	7'-1.346"	CU Solder-Nibco (CU Solder-Nibco x CS BSW (threaded))
CHWS	67	1	1/2"	7'-1.346"	CU Solder-Nibco (CU Solder-Nibco x CS BSW (threaded))
CHWS	68	1	1/2"	7'-1.346"	CU Solder-Nibco (CU Solder-Nibco x CS BSW (threaded))
CHWS	69	1	1/2"	7'-1.346"	CU Solder-Nibco (CU Solder-Nibco x CS BSW (threaded))
CHWS	70	1	1/2"	7'-1.346"	CU Solder-Nibco (CU Solder-Nibco x CS BSW (threaded))
CHWS	71	1	1/2"	7'-1.346"	CU Solder-Nibco (CU Solder-Nibco x CS BSW (threaded))
CHWS	72	1	1/2"	7'-1.346"	CU Solder-Nibco (CU Solder-Nibco x CS BSW (threaded))
CHWS	73	1	1/2"	7'-1.346"	CU Solder-Nibco (CU Solder-Nibco x CS BSW (threaded))
CHWS	74	1	1/2"	7'-1.346"	CU Solder-Nibco (CU Solder-Nibco x CS BSW (threaded))
CHWS	75	1	1/2"	7'-1.346"	CU Solder-Nibco (CU Solder-Nibco x CS BSW (threaded))
CHWS	76	1	1/2"	7'-1.346"	CU Solder-Nibco (CU Solder-Nibco x CS BSW (threaded))
CHWS	77	1	1/2"	7'-1.346"	CU Solder-Nibco (CU Solder-Nibco x CS BSW (threaded))
CHWS	78	1	1/2"	7'-1.346"	CU Solder-Nibco (CU Solder-Nibco x CS BSW (threaded))
CHWS	79	1	1/2"	7'-1.346"	CU Solder-Nibco (CU Solder-Nibco x CS BSW (threaded))
CHWS	80	1	1/2"	7'-1.346"	CU Solder-Nibco (CU Solder-Nibco x CS BSW (threaded))
CHWS	81	1	1/2"	7'-1.346"	CU Solder-Nibco (CU Solder-Nibco x CS BSW (threaded))
CHWS	82	1	1/2"	7'-1.346"	CU Solder-Nibco (CU Solder-Nibco x CS BSW (threaded))
CHWS	83	1	1/2"	7'-1.346"	CU Solder-Nibco (CU Solder-Nibco x CS BSW (threaded))
CHWS	84	1	1/2"	7'-1.346"	CU Solder-Nibco (CU Solder-Nibco x CS BSW (threaded))
CHWS	85	1	1/2"	7'-1.346"	CU Solder-Nibco (CU Solder-Nibco x CS BSW (threaded))
CHWS	86	1	1/2"	7'-1.346"	CU Solder-Nibco (CU Solder-Nibco x CS BSW (threaded))
CHWS	87	1	1/2"	7'-1.346"	CU Solder-Nibco (CU Solder-Nibco x CS BSW (threaded))
CHWS	88	1	1/2"	7'-1.346"	CU Solder-Nibco (CU Solder-Nibco x CS BSW (threaded))
CHWS	89	1	1/2"	7'-1.346"	CU Solder-Nibco (CU Solder-Nibco x CS BSW (threaded))
CHWS	90	1	1/2"	7'-1.346"	CU Solder-Nibco (CU Solder-Nibco x CS BSW (threaded))
CHWS	91	1	1/2"	7'-1.346"	CU Solder-Nibco (CU Solder-Nibco x CS BSW (threaded))
CHWS	92	1	1/2"	7'-1.346"	CU Solder-Nibco (CU Solder-Nibco x CS BSW (threaded))
CHWS	93	1	1/2"	7'-1.346"	CU Solder-Nibco (CU Solder-Nibco x CS BSW (threaded))
CHWS	94	1	1/2"	7'-1.346"	CU Solder-Nibco (CU Solder-Nibco x CS BSW (threaded))
CHWS	95	1	1/2"	7'-1.346"	CU Solder-Nibco (CU Solder-Nibco x CS BSW (threaded))
CHWS	96	1	1/2"	7'-1.346"	CU Solder-Nibco (CU Solder-Nibco x CS BSW (threaded))
CHWS	97	1	1/2"	7'-1.346"	CU Solder-Nibco (CU Solder-Nibco x CS BSW (threaded))
CHWS	98	1	1/2"	7'-1.346"	CU Solder-Nibco (CU Solder-Nibco x CS BSW (threaded))
CHWS	99	1	1/2"	7'-1.346"	CU Solder-Nibco (CU Solder-Nibco x CS BSW (threaded))
CHWS	100	1	1/2"	7'-1.346"	CU Solder-Nibco (CU Solder-Nibco x CS BSW (threaded))

**Client** Lee Company | Franklin, TN  
**Services** Point Cloud Scanning/Modeling, BIM Execution Planning, VDC Management, Clash Reporting, Construction Coordination, Mechanical and Plumbing 3D Coordination Modeling, Mechanical and Plumbing Fabrication Coordination Documents, Project Close-out Documents