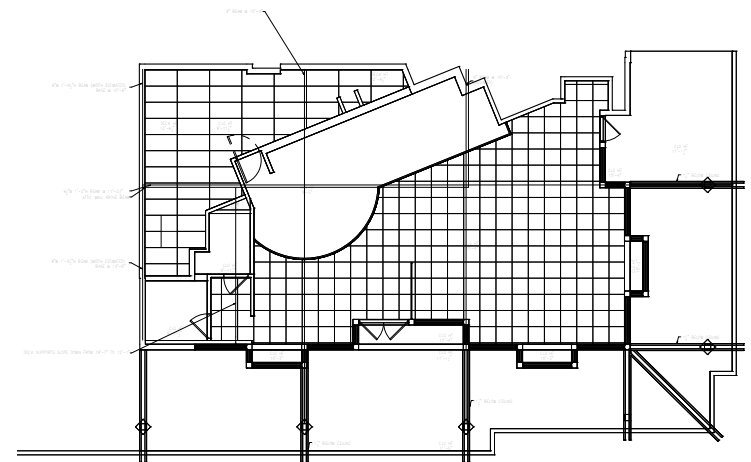
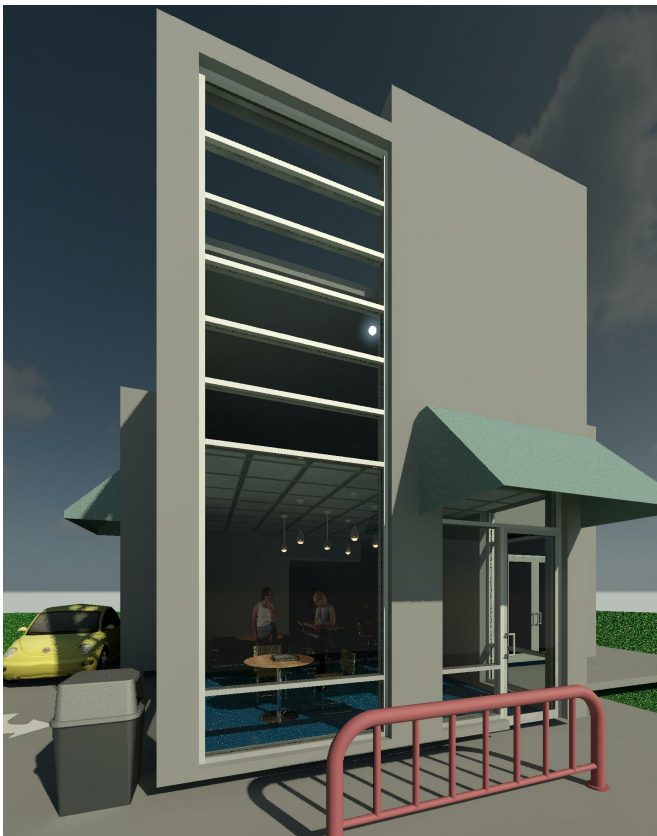
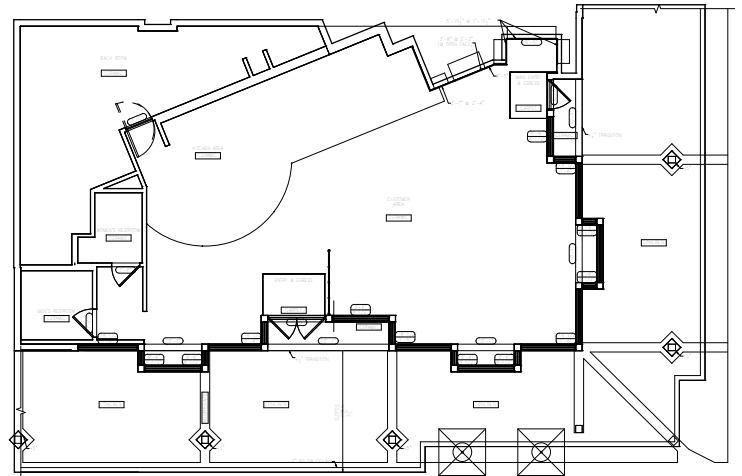


Starbucks

USA

Starbucks has made it a world-wide effort to document all their new and existing sites. For existing site, this requires a full survey of each site. This tedious task is converted to 2-dimensional as-built documents. While the 2-dimensional documents include specific information for outlets, data, loading, etc. The 3-dimensional documents are used for architectural upgrades and for facility management uses. The 3-dimensional model includes all architectural and structural design detailing materiality, awnings, and exterior structures. Additionally all major duct work - exposed and above ceilings, and location/size of major equipment including roof top equipment is included. S2A has been part of over 50 Starbucks site documentation projects across more than 10 states.



Client Coast 2 Coast Survey | Chattanooga, TN

Services 3D As-Built Documentation including Architecture, Structure, Mechanical Duct, and All Major Equipment