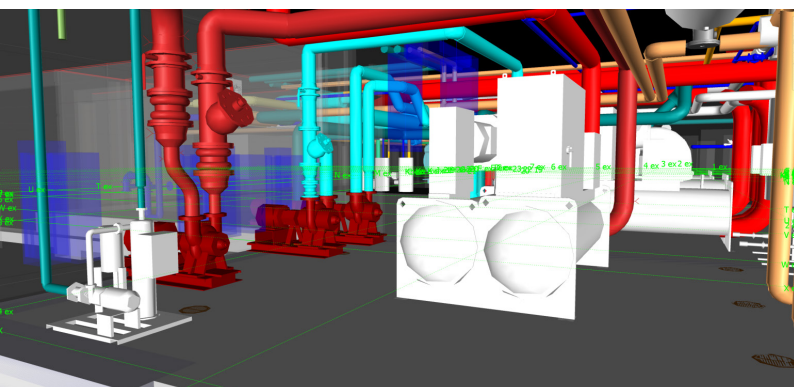
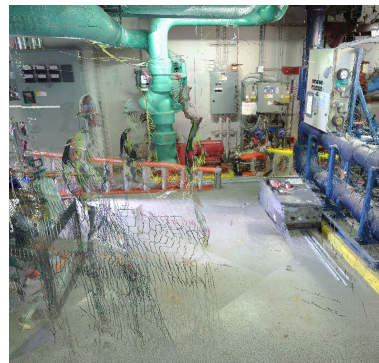
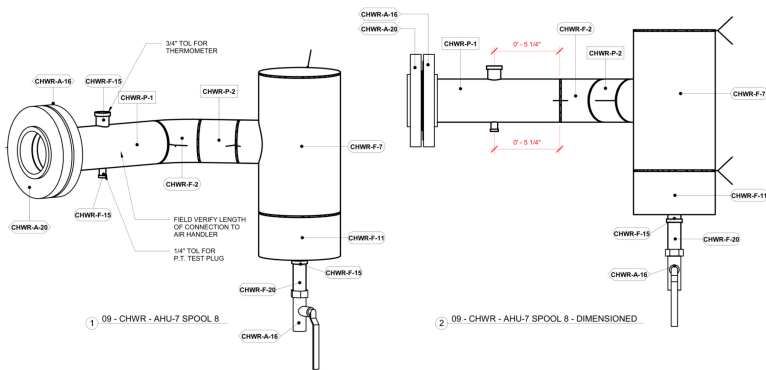
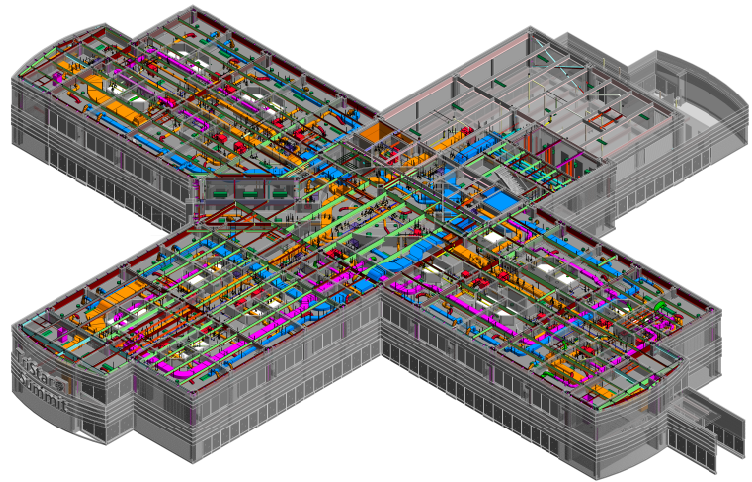


# Summit Medical Vertical Expansion

Hermitage, TN

As a result of the ever-expanding growth market, TriStar Health is planning more than \$500 million worth of expansion projects in middle Tennessee. One of the projects is the 8th floor expansion of the TriStar Summit hospital which will add 25 patient medical/telemetry patient rooms, a classroom/conference room, 2 charting stations on each hallway and additional storage. The new floor will be used as an area for short stay patients who may require additional testing and observation.

S2A Integration provided point cloud scanning and modeling to the existing powerhouse, coordination and documentation of the mechanical and plumbing systems, fabrication spooling drawings and hanger installation drawings for off-site fabrication.



Client **Lee Company** | Franklin, TN

Services Point Cloud Scanning/Modeling, BIM Execution Planning, VDC Management, Clash Reporting, Construction Coordination, Mechanical and Plumbing 3D Coordination Modeling, Mechanical and Plumbing Fabrication Coordination Documents, Project Close-out Documents