

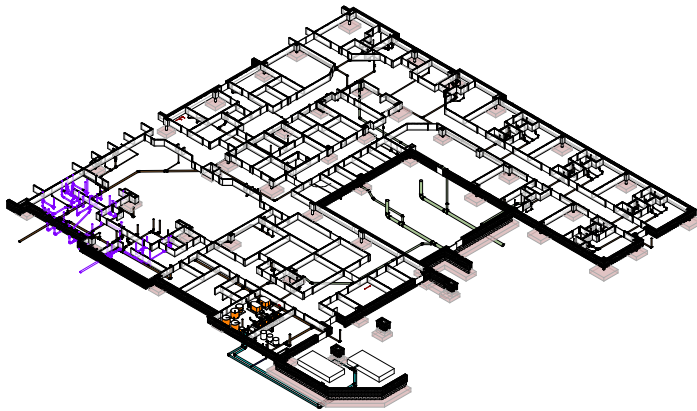


Tri-Star Maury Behavioral Health Facility

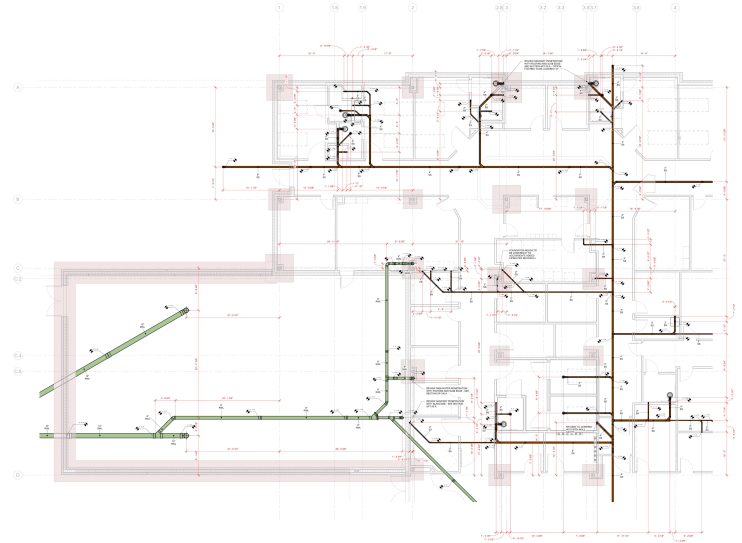
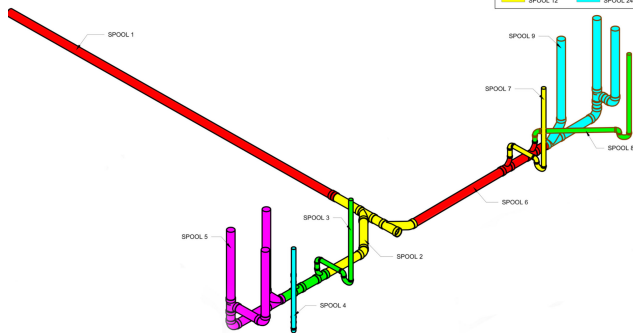
Columbia, TN

Maury Regional Health (MRH) and TriStar Health held a groundbreaking ceremony for a new inpatient behavioral health hospital on October 1, 2018. The new 60-bed 49,900 sq. ft. facility will be located at 1001 North James Campbell Boulevard in Columbia. The facility was completed in October 2019. TM Partners led the design and architectural needs for the project.

TriStar Maury Behavioral Health Hospital was the only inpatient behavioral health hospital in the region when built. The hospital will hold adults and adolescents in separate wings, dining areas, and also contain four activity courtyards.

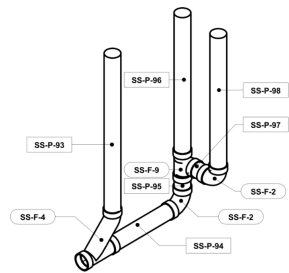


FABRICATION NOTES		SPOOL LEGEND	
1.	ALL DRAWINGS NOT TO SCALE UNLESS OTHERWISE NOTED.	SPOOL 1	SPOOL 13
2.	* DENOTES DIMENSIONS TO BE VERIFIED IN FIELD BASED ON EQUIPMENT LOCATION.	SPOOL 2	SPOOL 14
3.	MATERIAL, TYPE AND MANUFACTURER OF ALL PIPE FITTINGS AND ACCESSORIES BASED ON APPROVED SUBMITTALS BY LEE COMPANY.	SPOOL 3	SPOOL 15
		SPOOL 4	SPOOL 16
		SPOOL 5	SPOOL 17
		SPOOL 6	SPOOL 18
		SPOOL 7	SPOOL 19
		SPOOL 8	SPOOL 20
		SPOOL 9	SPOOL 21
		SPOOL 10	SPOOL 22
		SPOOL 11	SPOOL 23
		SPOOL 12	SPOOL 24



SPOOL-00-UG-B4 SANITARY PIPING - SPOOL 09					
ABBREVIATION	PIPE SPOOL TAG	SIZE	LENGTH	TYPE + MATERIAL	MANUFACTURER
SS	93	4"	4' - 4 3/8"	PVC DWV Solvent Charlotte (Waste)	Charlotte Pipe and Foundry Company
SS	94	4"	2' - 0"	PVC DWV Solvent Charlotte (Waste)	Charlotte Pipe and Foundry Company
SS	95	4"	0' - 5 7/8"	PVC DWV Solvent Charlotte (Waste)	Charlotte Pipe and Foundry Company
SS	96	4"	3' - 10 1/4"	PVC DWV Solvent Charlotte (Waste)	Charlotte Pipe and Foundry Company
SS	97	4"	0' - 5 7/8"	PVC DWV Solvent Charlotte (Waste)	Charlotte Pipe and Foundry Company
SS	98	4"	3' - 8 1/2"	PVC DWV Solvent Charlotte (Waste)	Charlotte Pipe and Foundry Company
			14' - 10 7/8"		

SPOOL-00-UG-B4 SANITARY PIPE FITTINGS - SPOOL 09					
ABBREVIATION	PIPE FITTING SPOOL TAG	SIZE	TYPE + MATERIAL	MANUFACTURER	
SS	2	4"-4"	Charlotte PVC Sch40 300 1, 4 Bend	Charlotte Pipe and Foundry Company	
SS	4	4"-4"-4"	Charlotte PVC Sch40 501 Combination Wye And 1, 8 Bend	Charlotte Pipe and Foundry Company	
SS	9	4"-4"-4"	Charlotte PVC Sch40 400 Sanitary Tee	Charlotte Pipe and Foundry Company	



① LEVEL 00 - UNDERGROUND SANITARY PIPE AREA B4 SPOOL 09

Client **Lee Company** | Franklin, TN

Services Clash Reporting, Construction Coordination and Installation Documents, Mechanical and Plumbing 3D Coordination Modeling, Mechanical and Plumbing Fabrication Coordination and Spooling Documentation