



INTEGRATION



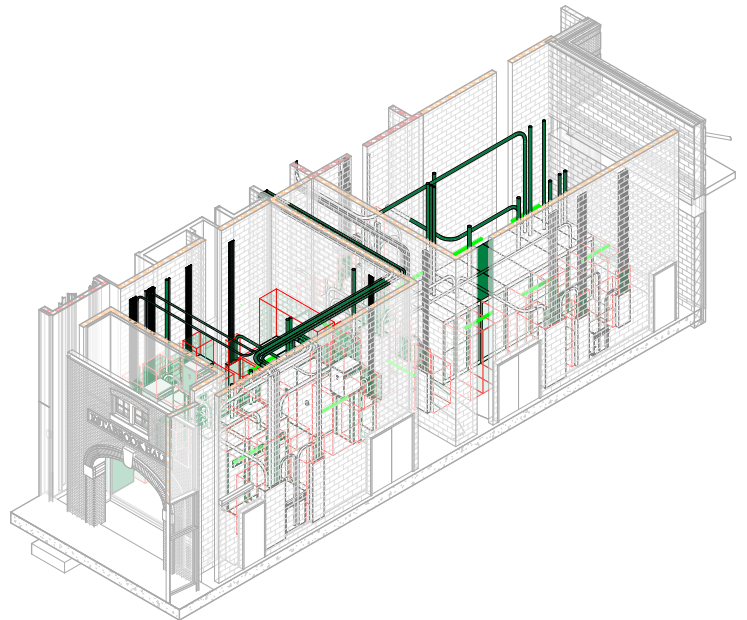
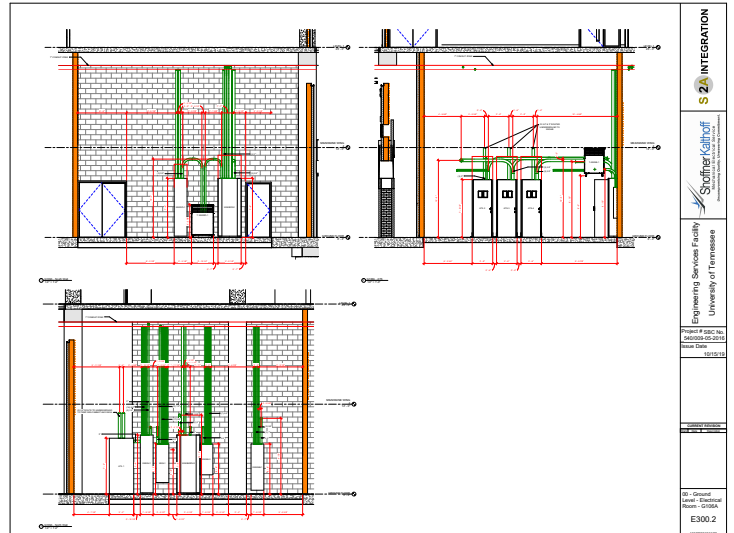
UT Engineering Services

Knoxville, TN

The University of Tennessee Engineering Services Facility, is a new 228,000 square foot facility that will be located on the southern side of the UT Campus between Estabrook Road and Neyland Drive. Knoxville's McCarty Holsaple McCarty is the architectural firm leading the design team. Smith Group will be designing the lab spaces. This new structure will cost approximately \$129 million. The facility was designed to provide state-of-the art innovative teaching, research, and developmental areas for the department of Nuclear Engineering and several of the engineering programs.

This facility will comprise of laboratory space, teaching labs, general purpose classrooms, student areas, conference rooms, and faculty/staff areas. 4 sections make up the facility with an atrium joining them. The 2 north sections are occupied by the laboratory spaces, classrooms, and faculty/staff offices. The southeast section are mainly administrative offices and the south west are open classrooms.

S2A provided electrical modeling, coordination, and documentation.



Client **Shoffner Kalthoff** | Knoxville, TN

Services Electrical 3D Coordination Modeling, Electrical Documentation