

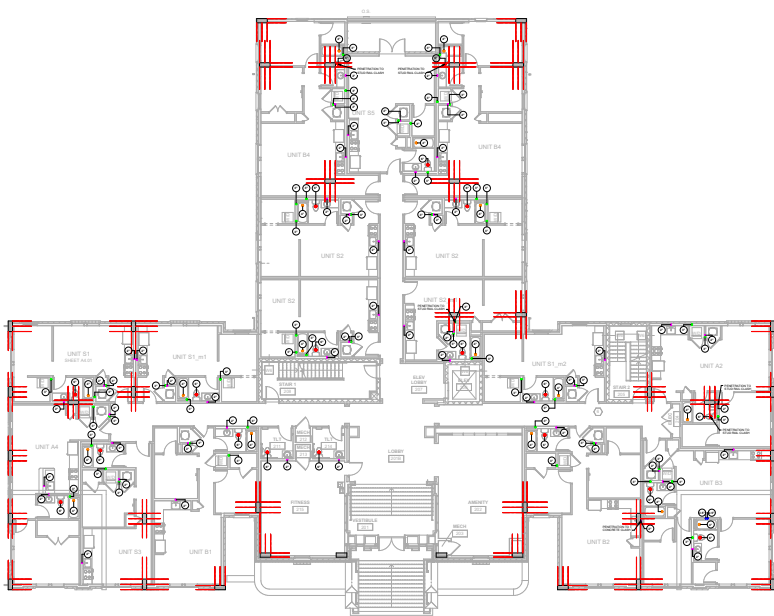
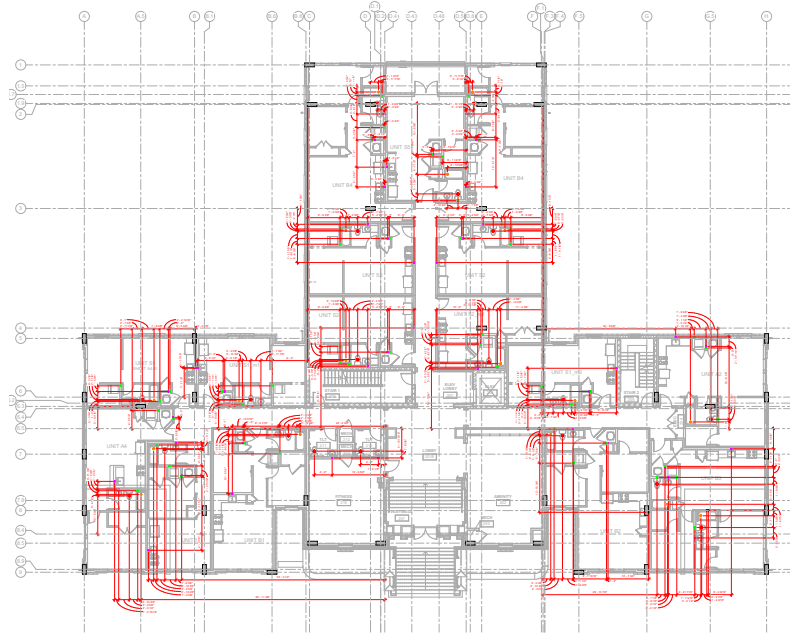


655 East Bay

Charleston, SC

The Flats at 655 East Bay is located in Charleston, SC and is a high-end 51-unit, 4-story apartment building. The 2nd through 4th floors include 1 and 2 bedroom units, a fitness center, lobby, and roof terrace. The 1st floor includes a parking garage serving the residents.

S2A was contracted by Harold K. Jordan to provide concrete coordination and documentation of the MEP sleeves and stud rails of the podium area. Stud rails are embedded steel plates with headed studs that serve as a reinforcement system in concrete deck to column connections. This system will ensure the load will be transferred throughout the concrete. Coordinating the stud rails early on will significantly reduce any cost/time to fixing any issues that may arise.



Client **Harold K. Jordan & Co. | Charleston, SC**

Services Sleeve Modeling, Constructability Review, Clash Reporting and Sleeve Installation Drawings