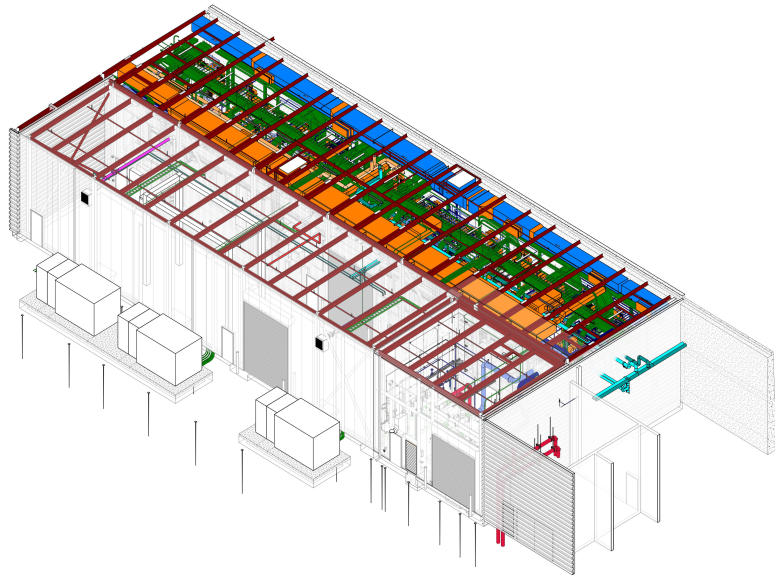


Spallation Neutron Source Building

Oak Ridge, TN

The Spallation Neutron Source (SNS) is an accelerator based system facility located at the Oak Ridge National Lab. The process of spallation begins by producing neutrons from an accelerator where high-energy proton pulses to a steel target of liquid mercury. The neutrons are directed through beam lines to special instruments where they are used to study in a wide range of experiments. SNS provides great opportunities within the scientific research community. The knowledge that comes from this research will inevitably result in improved efficiencies of everyday life.

S2A was contracted by ORNL to provide a constructability review of a building addition at the complex. S2A worked directly with the ORNL engineers to provide possible solutions to unforeseen issues during construction.



Client Oak Ridge National Lab | Oak Ridge, TN

Services Clash Reporting and Documentation